

# 2006 Elliott H90

- Mounted on 2006 International 7400
- 90 foot tall platform
- 7 ton max lifting capacity
- 5.5ft max diameter dirt auger
- Asking \$110,000



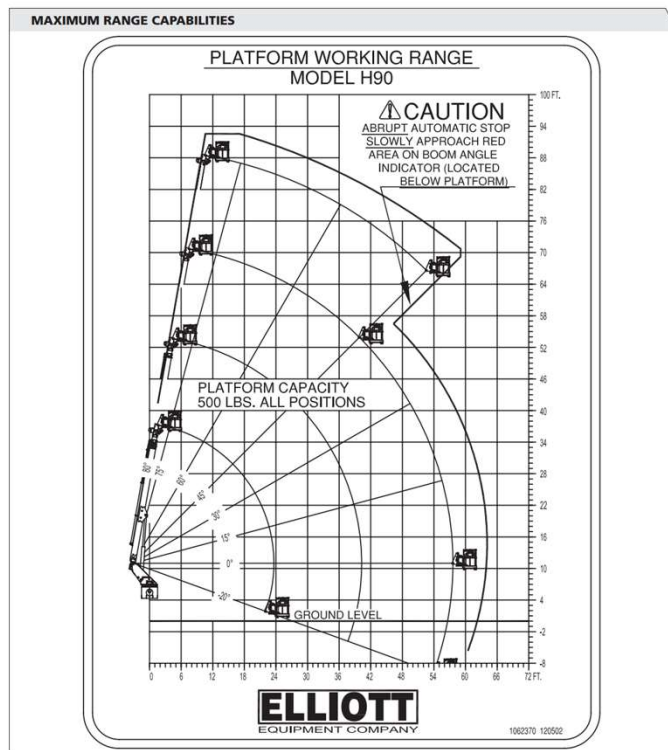






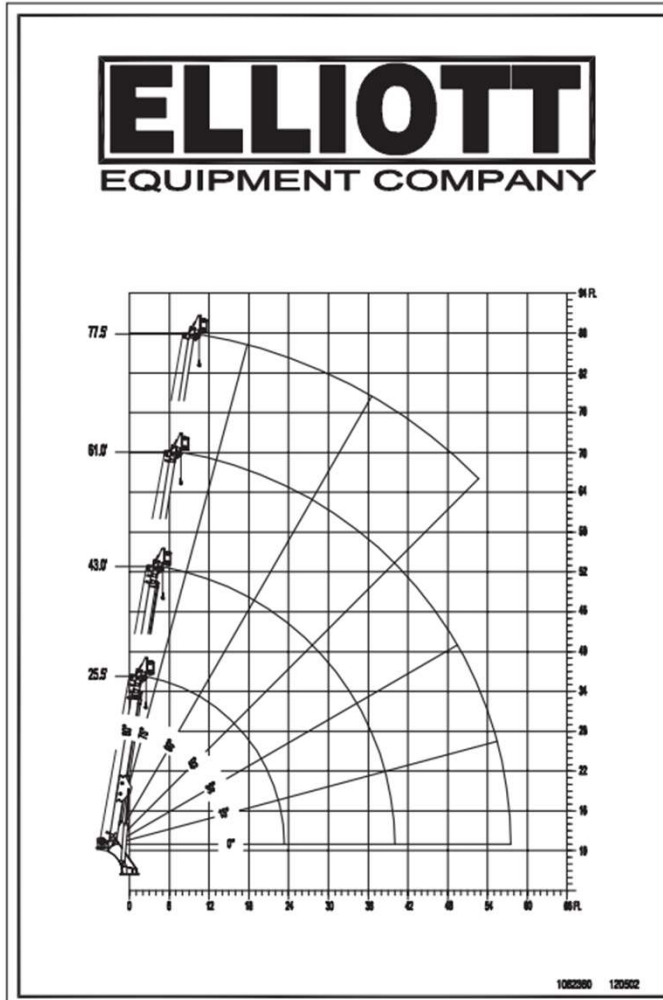
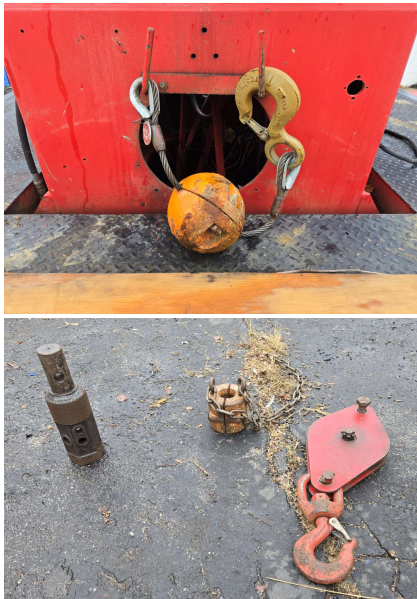


# Crew Working Height 93ft (hand height in platform)



# 7 ton Max Lift

- 77.5 Max sheave height
- 14,000# max with multi-part line
- 5000# max single-line lift
- Removable hook & pulley included



## MAXIMUM WORKING LOADS MATERIAL HANDLING OPERATION MODEL H90

RADIUS (FT.)	25.5' BOOM LENGTH		43.0' BOOM LENGTH	
	ANGLE (DEG.)	LOAD (LBS.)	ANGLE (DEG.)	LOAD (LBS.)
3	80	14,000		
5	75	8,000	80	7,000
8	88	7,200	75	5,000
11	80	6,000	72	4,900
16	45	5,000	84	4,800
19	34	4,600	60	4,500
20	30	4,500	58	4,400
22	15	4,200	55	4,300
23	0	4,000	53	4,300
28			45	4,100
34			30	3,700
39			15	3,300
40			0	3,000

RADIUS (FT.)	61.0' BOOM LENGTH		77.5' BOOM LENGTH	
	ANGLE (DEG.)	LOAD (LBS.)	ANGLE (DEG.)	LOAD (LBS.)
8	80	4,000		
11	77	3,400	80	3,000
13	75	3,000	78	2,900
18	70	2,800	75	2,500
28	80	2,500	67	2,200
36	50	2,100	60	2,000
40	45	1,900	57	1,800
49	30	1,500	48	1,400
53	22	1,400	45	1,200
55	15	1,300		
57	0	1,200		

USE OUTRIGGERS AT ALL TIMES \* AVOID JERKING LOADS  
360° RADIUS \* USE 2 PART LINE FOR LOADS OVER 5000 LBS.  
DEDUCT 125 LBS. WITH BASKET ATTACHED

# Dirt Auger

Rear Reach: 14 – 35ft

Side Reach: 11 – 31ft

7” Planetary type hydraulic dirt auger motor

Rated up to 66” auger bits

Primary Drive Pin: 2.5” hex

Primary Auger: 24” x 96” on 6ft Kelly bar with extendable mounts.

Secondary Augers:

- 2.5” to 2” Hex adapter
- 96” Kelly bar
- 36” round auger bit
- 24” round auger bit
- 16” round auger bit
- 2” Hex to 2” round adapter

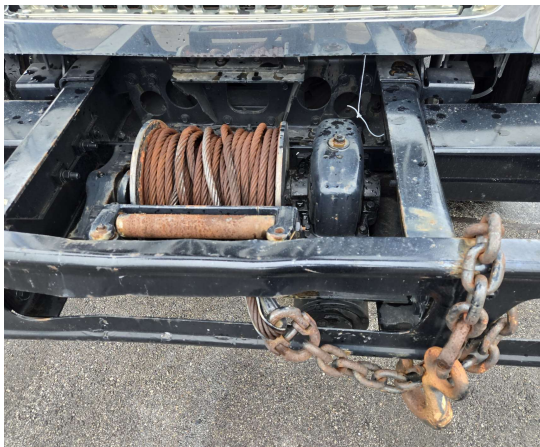






## Other Features

### Onboard PTO-powered front bumper winch



### Onboard PTO-powered 225amp welder

- Ground and Work lead at right side bed
- Work lead in platform
- 25ft Ground and 10ft Work cables included

### Onboard PTO-powered power washer

- No water tank onboard
- Never tested, unsure of operation
- No wands or other required elements

### Oxy-Acetylene Provision

- Bed cut-outs and lower bracket for large Oxygen & Acetylene tanks
- Hoses removed from boom track due to aging and reliability.

# 2006 International 7400

- VIN: **1HTWGAZT06J309840**
- Mileage: **127610**
- Engine: **DT466**
- Transmission: **Allison 6sp auto**
- **Rear lockers**
- **Flotation front tires**
- **Extended cab with rear bench seat**
- **All tires good condition**

## Known Issues

- Main Load Line Cable due for replacement
- Crane safety labels due for replacement
- Hi-Lo speed works at rear bumper, but not at turret controls
- Turret swivel has intermittent leaks with large temperature swings
- Anti-2-block is bypassed and due for replacement
- Windshield cracked, due for replacement