

1988 National 556b

- Mounted on 2006 Hino 338
- 99 foot max height with 35ft jib
- 12.5 ton max crane
- Asking \$50,000







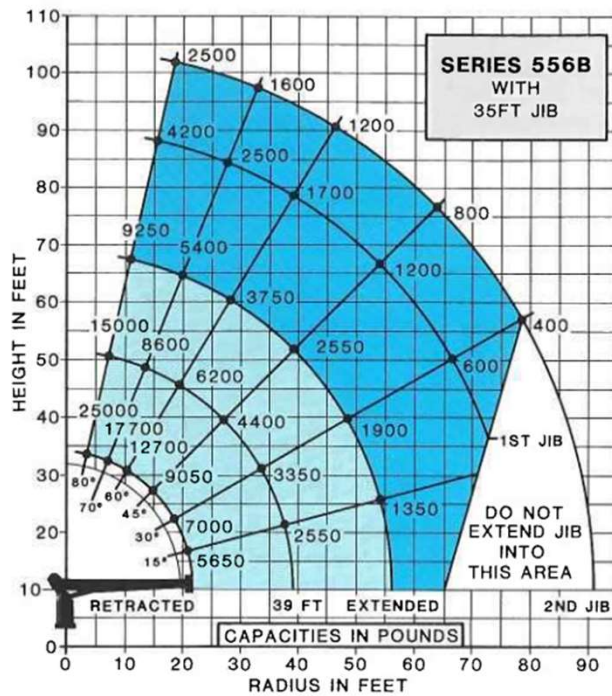




12.5 ton Max Lift

- 101ft Max sheave height
- 25,000# max with multi-part line

- 7000# max single-line lift



556B Capacity*

(Metric equivalents shown in parentheses)

Radius	All Booms Retracted	Second Section Extended	Third Section Extended
Maximum Capacity	25,000 lbs. (11,340kg)		
8' (2.4m)	18,300 lbs. (8,300kg)	15,200 lbs. (6,894kg)	
12' (3.7m)	12,500 lbs. (5,670kg)	10,800 lbs. (4,898kg)	9,400 lbs. (4,263kg)
16' (4.9m)	9,200 lbs. (4,173kg)	8,150 lbs. (3,696kg)	7,250 lbs. (3,288kg)
20' (6.1m)	6,800 lbs. (3,084kg)	6,650 lbs. (3,016kg)	5,950 lbs. (2,698kg)
24' (7.3m)		5,500 lbs. (2,494kg)	4,950 lbs. (2,245kg)
28' (8.5m)		4,650 lbs. (2,109kg)	4,200 lbs. (1,905kg)
32' (9.8m)		3,900 lbs. (1,769kg)	3,600 lbs. (1,632kg)
36' (11.0m)		3,150 lbs. (1,428kg)	3,150 lbs. (1,428kg)
40' (12.2m)			2,750 lbs. (1,247kg)
44' (13.4m)			2,400 lbs. (1,088kg)
48' (14.6m)			2,050 lbs. (929kg)
52' (15.9m)			1,700 lbs. (771kg)

*Capacities shown are for the 556B with the load suspended. Radius shown includes increase due to boom deflection. Capacities vary for cranes equipped with jibs or attachments. Consult factory for specific load rating information.

Boom Tip One-Man
Basket
101 foot max
crew working height
(additional 16ft jib stinger
not shown in photo)



2006 Hino 338

- VIN: **5PVNV8JV362S50085**
- Mileage: **193391**
- Engine: **J08E-VB**
- Transmission: **Eaton FS6406A 6 speed manual**
- **Pre-emissions engine for extended idling**
- **All tires good condition**
- **(1) 2ft x 2ft x 4ft and (1) 2ft x 2ft x 3ft underbed cabinets**
- **Body swap, full paint & service in 2017**
- **Boom-out sheave cable refurbished in 2019**

Known Issues

- Boom and outrigger labels due for safety replacement